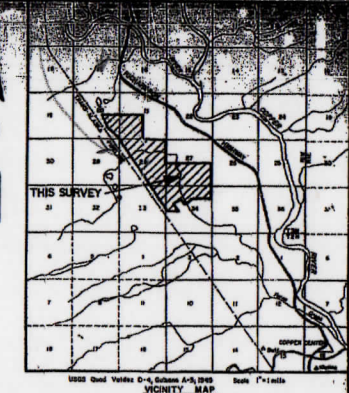
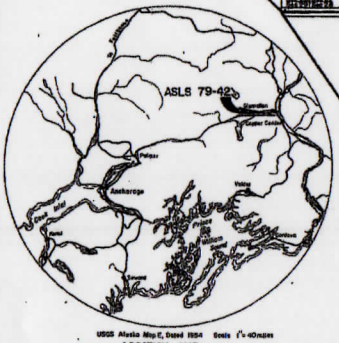
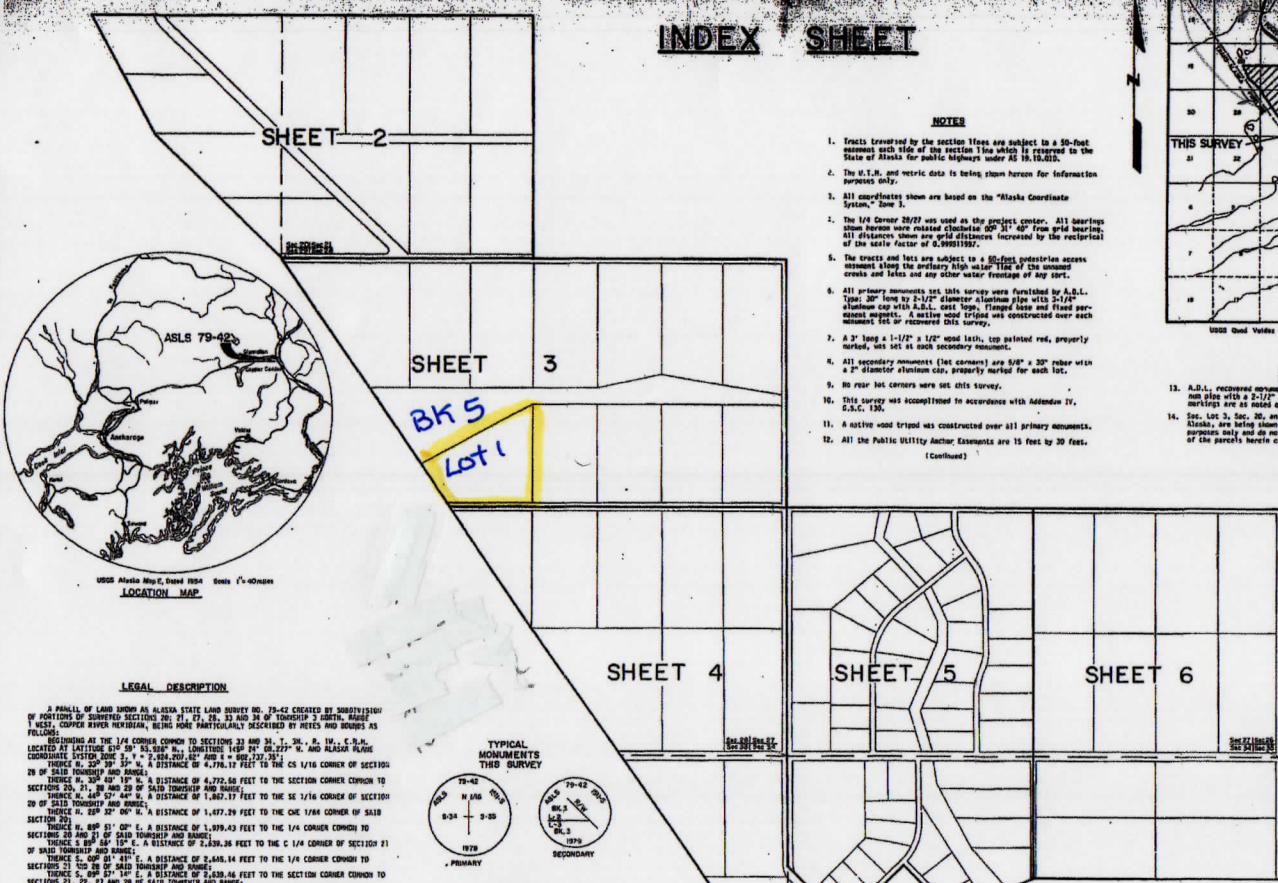


INDEX SHEET



- NOTES**
- Tracts transferred by the section lines are subject to a 50-foot easement each side of the section line which is reserved to the State of Alaska for public highway under AS 19.15.021.
 - The U.T.M. and metric data is being shown herein for information purposes only.
 - All contours shown are based on the "Alaska Coordinate System," Zone 5.
 - The 1/4 Corner 28/27 was used as the project center. All bearings shown herein were related clockwise 30° 31' 40" from grid bearing. All distances shown are grid distances increased by the reciprocal of the scale factor of 0.999911987.
 - The tracts and lots are subject to a 30-foot pedestrian access easement along the ordinary high water line of the common creeks and lakes and any other water frontage of any sort.
 - All primary monuments are 100-foot monuments furnished by A.S.L. Type: 30" long by 2-1/2" diameter aluminum pipe with 2-1/2" aluminum cap with A.S.L. cast loop, flanged base and flared permanent magnet. A native wood tripod was constructed over each monument lot or recovered this survey.
 - A 3" long x 1-1/2" x 1/2" wood lathe, top painted red, properly marked, was set at each secondary monument.
 - All secondary monuments (not cement) are 5/8" x 30" rebar with a 2" diameter aluminum cap, properly marked for each lot.
 - No rear lot corners were set this survey.
 - This survey was accomplished in accordance with Addendum IV, S.A.C. 130.
 - A native wood tripod was constructed over all primary monuments.
 - All the Public Utility Anchor Elements are 15 feet by 30 feet.
- (Continued)

LEGAL DESCRIPTION

A PARCEL OF LAND SHOWN AS ALASKA STATE LAND SURVEY NO. 79-42 CREATED BY SUBDIVISION OF PORTIONS OF SURVEYED SECTIONS 20, 21, 27, 28, 33 AND 34 OF TOWNSHIP 3 NORTH, RANGE 1 WEST, COPPER RIVER MERIDIAN, BEING MORE PARTICULARLY DESCRIBED BY METES AND BOUNDS AS FOLLOWS:

BEGINNING AT THE 1/4 CORNER COMMON TO SECTIONS 33 AND 34, T. 3N., R. 1W., C.R.M., LOCATED AT LATITUDE 64° 00' 00" N., LONGITUDE 150° 00' 00" W. AND ALASKA GRID COORDINATE SYSTEM ZONE 5, X = 2,484,203.487 AND Y = 492,737.387;

THENCE S. 02° 00' 00" W. A DISTANCE OF 4,761.70 FEET TO THE SW 1/4 CORNER OF SECTION 28 OF SAID TOWNSHIP AND RANGE;

THENCE S. 02° 00' 00" W. A DISTANCE OF 4,772.68 FEET TO THE SECTION CORNER COMMON TO SECTIONS 20, 21, 27 AND 28 OF SAID TOWNSHIP AND RANGE;

THENCE S. 88° 27' 44" W. A DISTANCE OF 1,827.71 FEET TO THE SE 1/4 CORNER OF SECTION 20 OF SAID TOWNSHIP AND RANGE;

THENCE N. 88° 27' 44" W. A DISTANCE OF 1,477.29 FEET TO THE CW 1/4 CORNER OF SAID SECTION 20;

THENCE N. 88° 27' 44" W. A DISTANCE OF 3,879.43 FEET TO THE 1/4 CORNER COMMON TO SECTIONS 20 AND 21 OF SAID TOWNSHIP AND RANGE;

THENCE S. 88° 27' 44" W. A DISTANCE OF 7,426.36 FEET TO THE C 1/4 CORNER OF SECTION 21 OF SAID TOWNSHIP AND RANGE;

THENCE S. 88° 27' 44" W. A DISTANCE OF 2,448.14 FEET TO THE 1/4 CORNER COMMON TO SECTIONS 21, 26, 27 AND 28 OF SAID TOWNSHIP AND RANGE;

THENCE S. 88° 27' 44" W. A DISTANCE OF 2,439.46 FEET TO THE 1/4 CORNER COMMON TO SECTIONS 27 AND 28 OF SAID TOWNSHIP AND RANGE;

THENCE S. 88° 27' 44" W. A DISTANCE OF 2,421.36 FEET TO THE 1/4 CORNER COMMON TO SECTIONS 26 AND 27 OF SAID TOWNSHIP AND RANGE;

THENCE S. 88° 27' 44" W. A DISTANCE OF 2,429.72 FEET TO THE SECTION CORNER COMMON TO SECTIONS 26, 27, 28 AND 33 OF SAID TOWNSHIP AND RANGE;

THENCE S. 88° 27' 44" W. A DISTANCE OF 1,376.10 FEET TO THE N 1/4 CORNER COMMON TO SECTIONS 26 AND 28 OF SAID TOWNSHIP AND RANGE;

THENCE N. 88° 27' 44" W. A DISTANCE OF 2,422.92 FEET TO THE CW 1/4 CORNER OF SAID SECTION 24;

THENCE N. 88° 27' 44" W. A DISTANCE OF 30.60 FEET;

THENCE S. 88° 27' 44" W. A DISTANCE OF 276.27 FEET;

THENCE S. 88° 27' 44" W. A DISTANCE OF 62.00 FEET;

THENCE N. 88° 27' 44" W. A DISTANCE OF 122.00 FEET TO THE P.C. OF A CURVE TO THE LEFT;

THENCE ALONG A CURVE TO THE LEFT THROUGH A DELTA ANGLE OF 110° 23' 56" AN ARC LENGTH OF 181.20 FEET TO THE P.C.;

THENCE S. 88° 27' 44" W. A DISTANCE OF 276.00 FEET TO THE P.C. OF A CURVE TO THE LEFT;

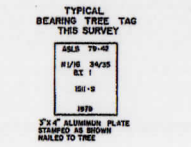
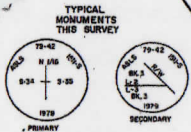
THENCE ALONG A CURVE TO THE LEFT THROUGH A DELTA ANGLE OF 88° 27' 44" AN ARC LENGTH OF 84.82 FEET TO THE P.C.;

THENCE S. 88° 27' 44" W. A DISTANCE OF 848.54 FEET;

THENCE S. 88° 27' 44" W. A DISTANCE OF 848.50 FEET TO THE P.C. OF A CURVE TO THE RIGHT;

THENCE ALONG A CURVE TO THE RIGHT THROUGH A DELTA ANGLE OF 110° 23' 56" AN ARC LENGTH OF 181.20 FEET TO A POINT ON THE EAST-WEST CENTERLINE OF SECTION 24;

THENCE ALONG SAID CENTERLINE N. 88° 27' 44" W. A DISTANCE OF 1,166.17 FEET TO THE POINT OF BEGINNING; AND PARCELS ALL HEREIN DESCRIBED WITHIN SECTIONS 20, 21, 27, 28, 33 AND 34 OF TOWNSHIP 3 NORTH, RANGE 1 WEST, COPPER RIVER MERIDIAN AND CONTAINING 1,227.34 ACRES MORE OR LESS, 396.70 HECTARES MORE OR LESS.



- NOTES (Continued)**
- A.S.L. recovered monuments are 30" long by 2-1/2" diameter aluminum pipe with a 2-1/2" aluminum cap and a flanged base. Cap markings are as noted on each sheet.
 - See Lot 2, Sec. 20, and Sec. Lot 2, Sec. 21, T. 3N., R. 1W., C.R.M., Alaska, and bearing shown between the points and locate illustration appears only and do not necessarily coincide with the boundaries of the parcel's heretofore created.

- LEGEND**
- ⊕ OLD recovered monument
 - ⊙ ADL recovered monument
 - ⊙ ADL monument set this survey (Primary Monuments) (See Note 3)
 - ⊙ Rebar with cap (3/4"x20") set this survey (Secondary Monuments) (See Note 4)
 - Body of water or pond

SECTION INFORMATION

Survey Section - 155
 Patent # 822-41, dated May 24, 1952

79-17
 COPY NO.
 INFORMATION FILED
 CHANGING - 10
 ALSO A
 ASL

SCALE
 1" = 400'

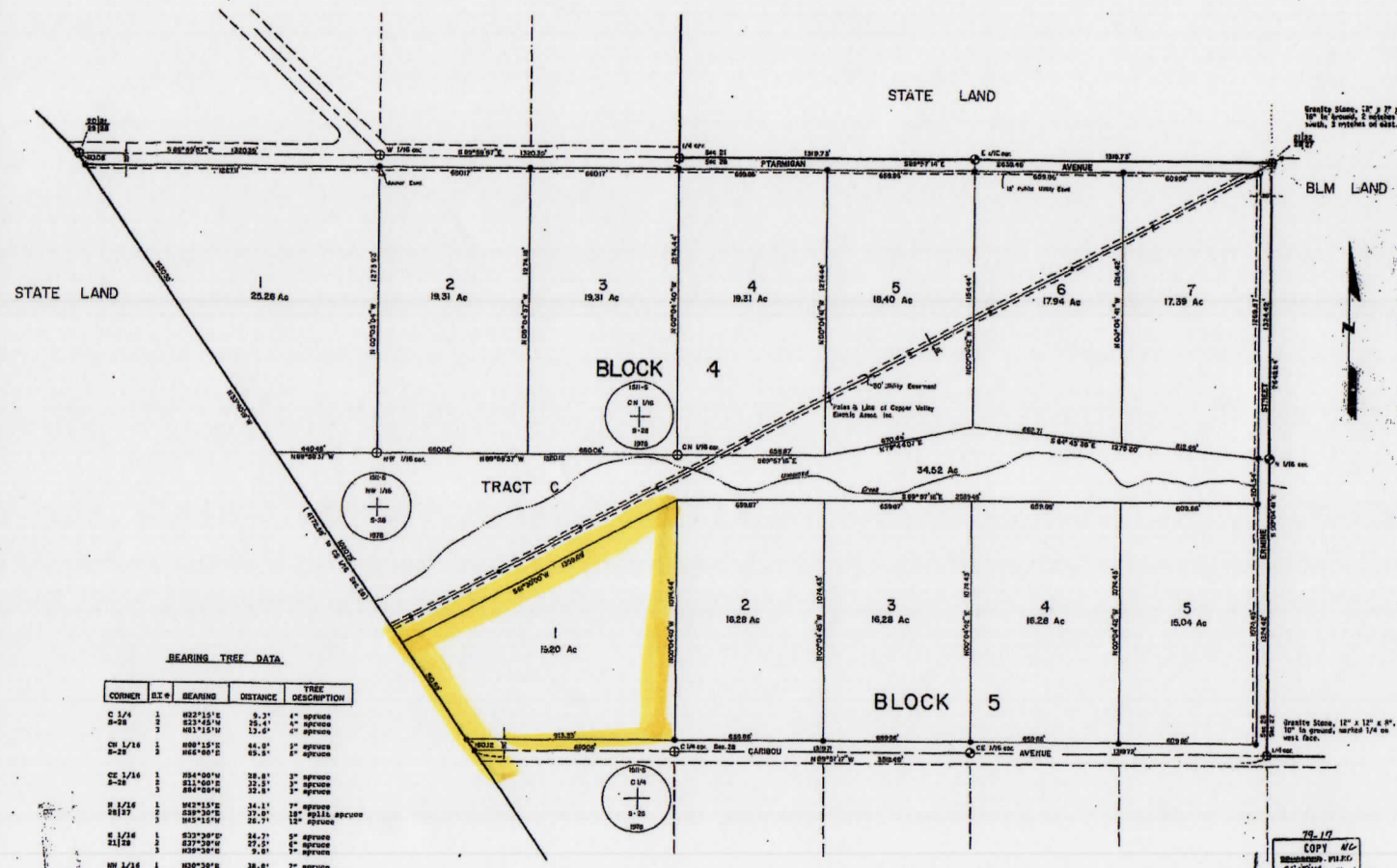
DATE OF SURVEY
 1979

STATE OF ALASKA
 DEPARTMENT OF NATURAL RESOURCES
 DIVISION OF LANDS

ALASKA STATE LAND SURVEY NO. 79-42

LOCATED WITHIN SURVEYED SECTIONS 20, 21, 27, 28, 33, 34, T. 3N., R. 1W., COPPER RIVER MERIDIAN, ALASKA

1222.34 ACRES MORE OR LESS, OR 493.70 HECTARES MORE OR LESS
 NET AREA 1219.93 ACRES MORE OR LESS, OR 493.34 HECTARES MORE OR LESS EXCLUDES SHORLANDS



BEARING TREE DATA

CORNER	BLK #	BEARING	DISTANCE	TREE DESCRIPTION
C 1/4	1	M22°15'E	9.3'	4" spruce
B-28	2	M21°45'W	25.6'	4" spruce
	3	M61°15'W	13.6'	4" spruce
CH 1/16	1	M00°15'E	44.8'	5" spruce
B-28	1	M86°08'E	85.5'	2" spruce
CE 1/16	1	M84°00'W	28.8'	3" spruce
B-28	2	M84°08'W	22.5'	1" spruce
	3	M84°08'W	22.5'	1" spruce
H 1/16	1	M62°15'E	24.1'	7" spruce
B157	2	M39°30'E	27.8'	18" willow spruce
	3	M45°15'W	26.7'	12" spruce
E 1/16	1	M33°30'W	24.7'	5" spruce
B158	2	M37°30'W	27.5'	6" spruce
	3	M36°38'W	9.8'	5" spruce
HW 1/16	1	M30°30'E	28.8'	7" spruce
B-28	2	M32°00'W	11.5'	6" spruce
	3	M49°15'W	23.2'	4" spruce

79-17
 COPY NO.
 REVISIONS
 DATE
 BY
 CHECKED
 DATE

SCALE
 1" = 400' HORIZONTAL
 1" = 80' VERTICAL

ALASKA STATE LAND SURVEY NO. 79-42

LOCATED WITHIN SURVEYED SECTIONS 20,21,27,28,33,834, T. 3N., R. 1W. COPPER RIVER MERIDIAN, AK.