

Bld. A:

Main Bld. on Lodge:
2 Story Living Area
36'X40' Lower Level with 10'X10' addition
20'X40' Upper level with 10'X10' Tip-out.

Bld. B:

24'X 16' Workshop

Bld. C:

Generator Shed:
With Storage for Tools
and misc. Equipment

Bld. D:

Fishing Equipment Shack

Bld. E:

16'X 30' 2 Story Cabin
Fully self contained with:
Refrigerator, Cook Stove, oil heater
1500 watt converter and battery
Sleeps 6-8 people comfortably

Bld. F:

16'X 20' Gazebo

Bld. G & H:

Small Storage Sheds

Bld. J & K:

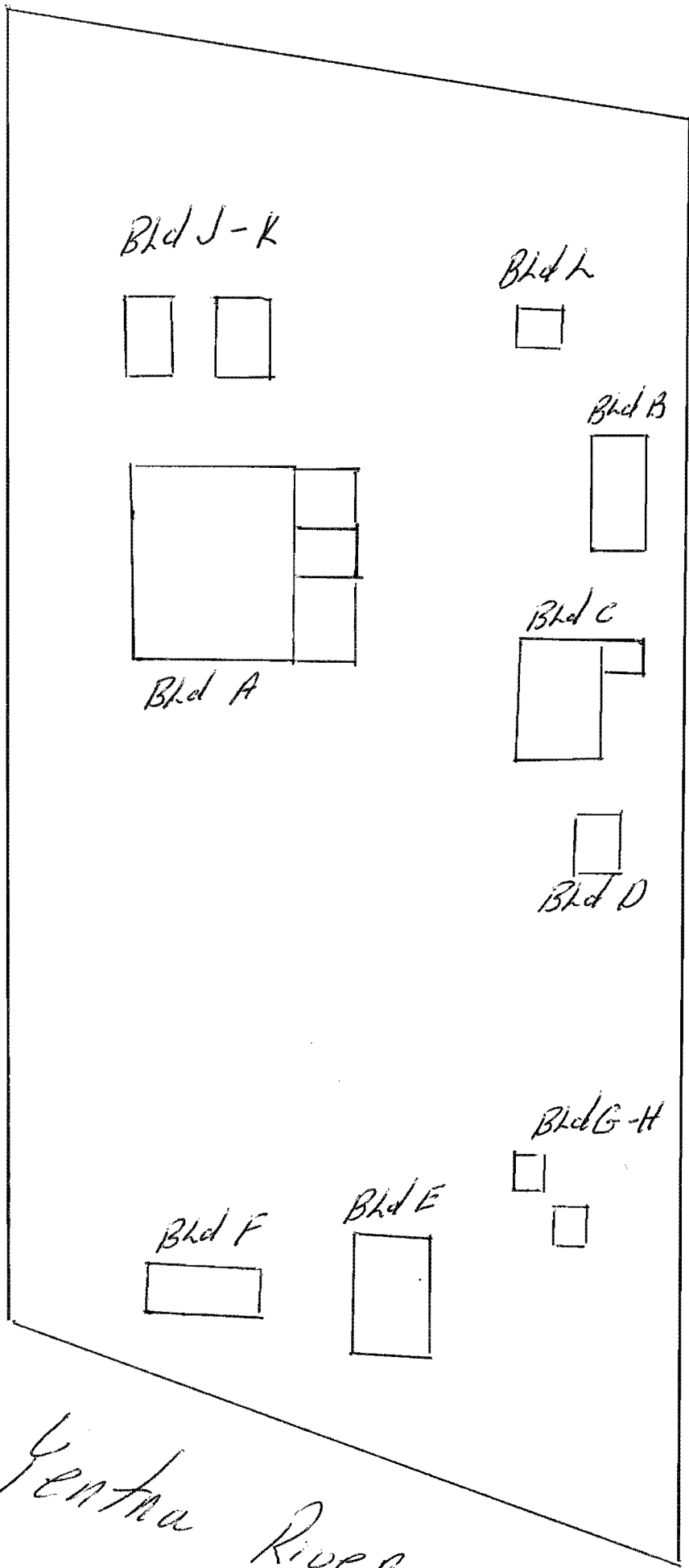
2 12' X 16' Cabins

Each sleeps 4 people

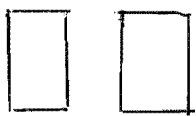
Bld. L:

8' X 15' Fuel Shed

2 1/2 Acres



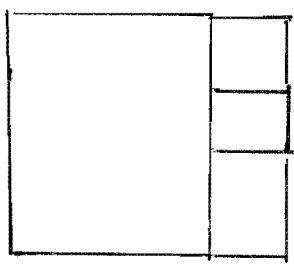
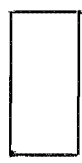
Bld J-K



Bld L

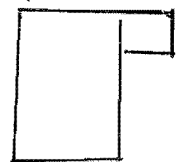


Bld B



Bld A

Bld C



Bld D



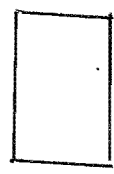
Bld G-H



Bld F



Bld E

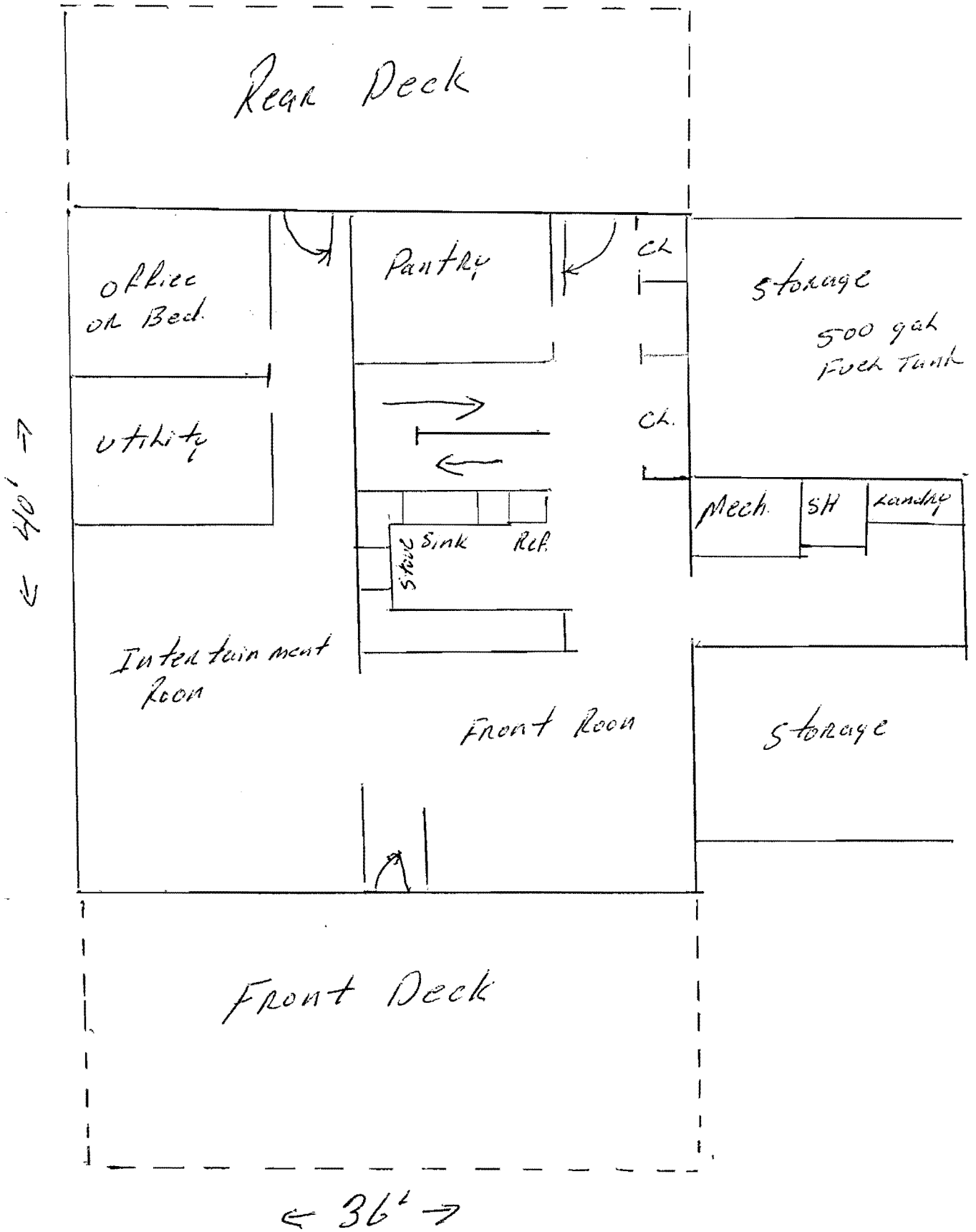


North



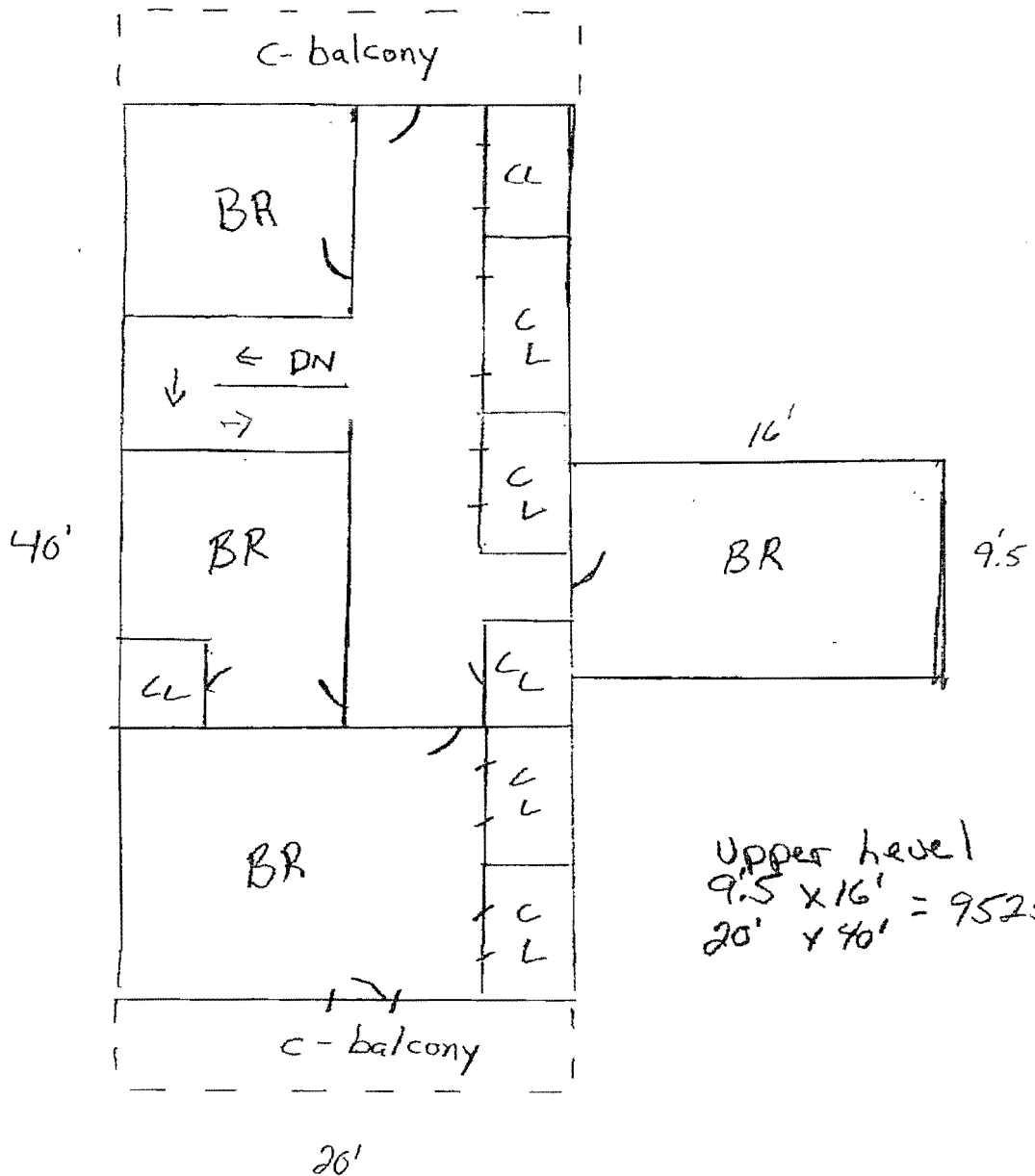
Yentna River

Bld A

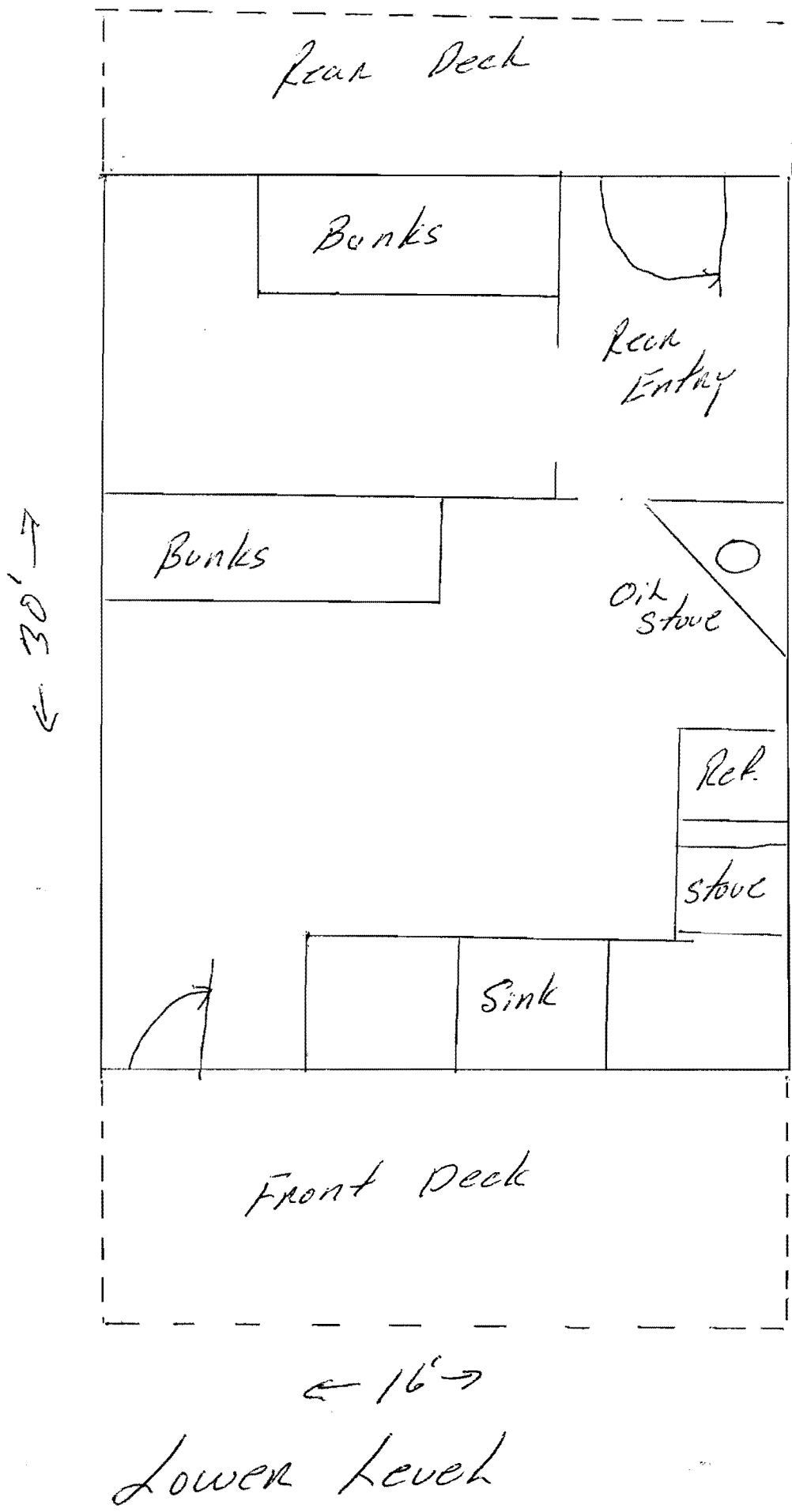


BDA

Interior walls Not to Scale



Bld E

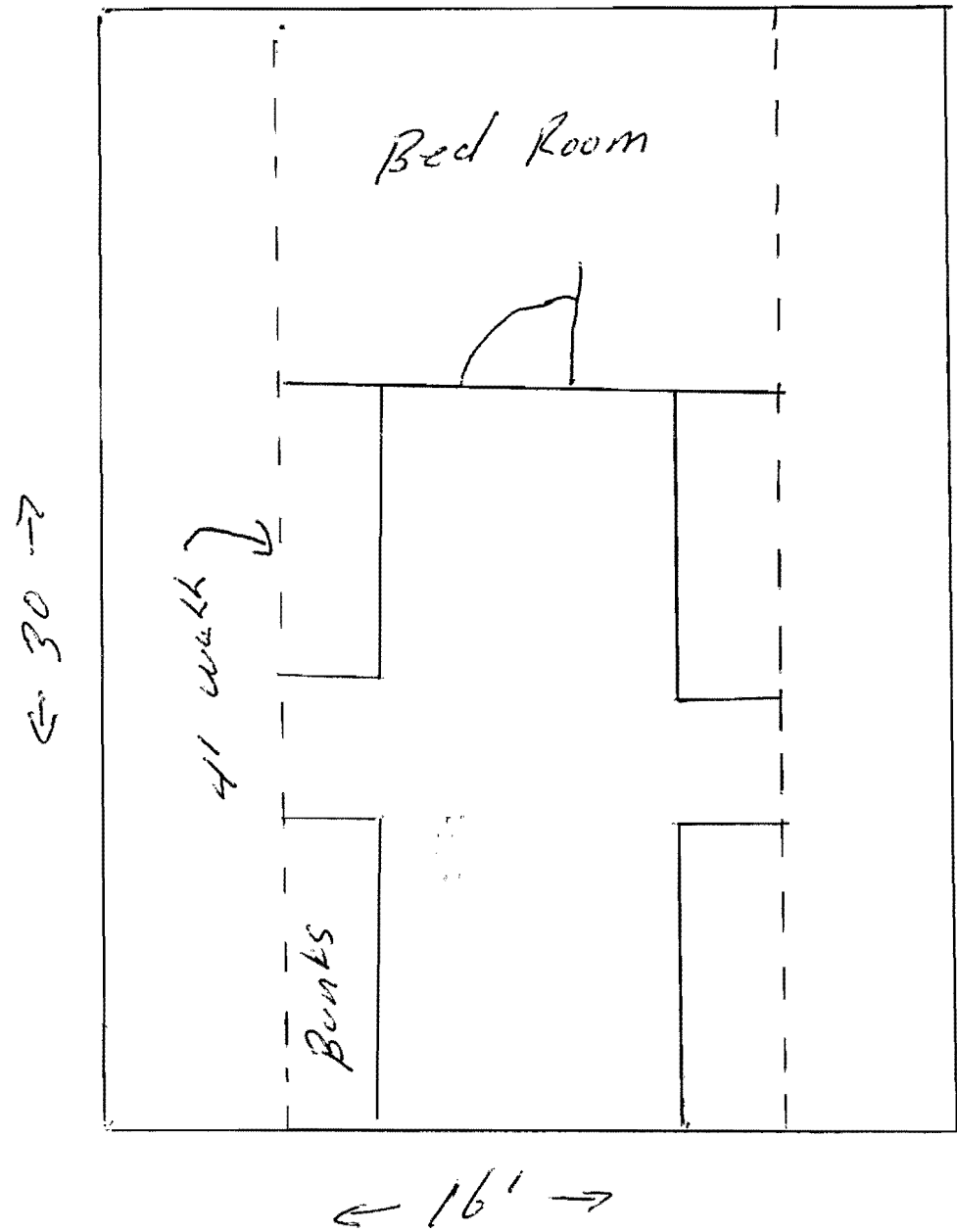


← 30' →

← 16' →

Lower Level

Bld. E



Bld J-K

