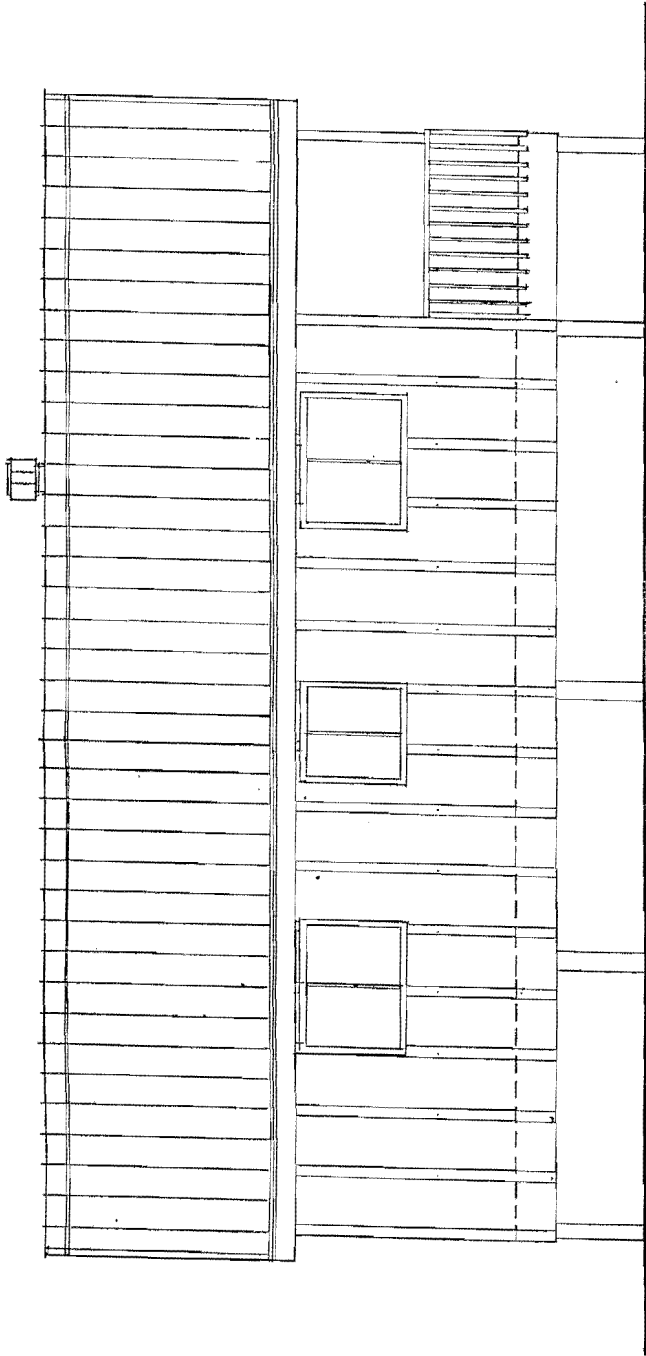


**FRONT ELEVATION**  
1/4" = 1'-0"



LEFT ELEVATION  
1/4" = 1'-0"

WOOD STOVE FLUE - FOLLOW  
LOCAL JURISDICTION FOR TYPE  
& HEIGHT.

RIDGE VENT

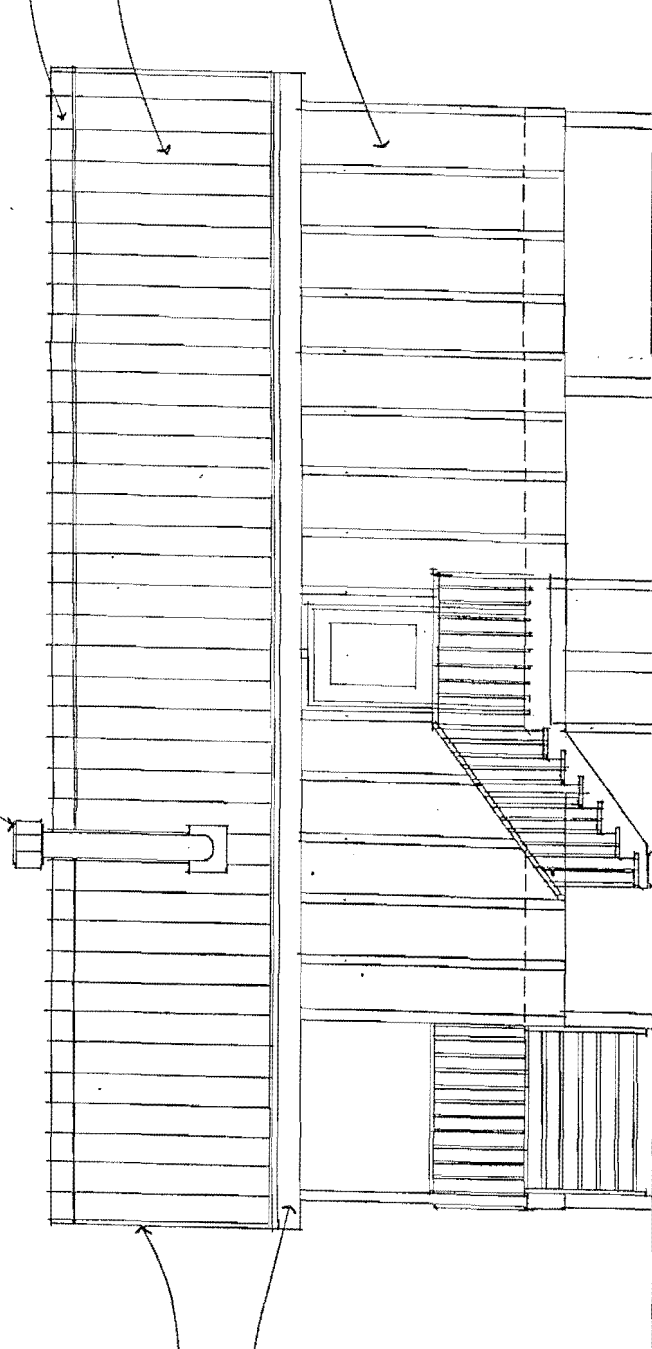
STANDING SEAM METAL  
ROOFING

1/2" T-11 PLYWOOD SIDING  
W/ 1" O.C. BATS @ 2' O.C.

R. SHEET METAL  
MATCH ROOF

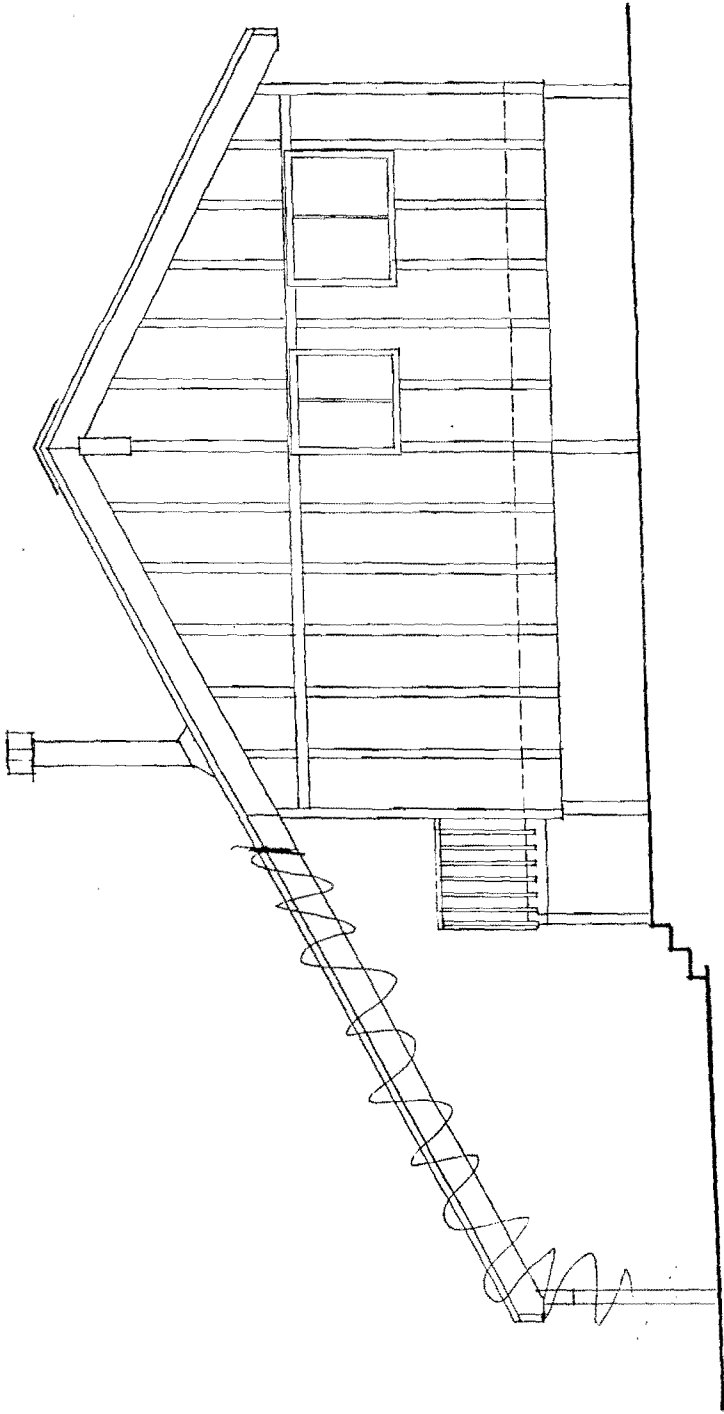
METAL  
MATCH ROOF

15



**RIGHT ELEVATION**  
 VIEWED FROM INSIDE GARFORT  
 1/4" = 1'-0"

VIEWED FROM INSIDE UNIT -



BACK ELEVATION  
1/4" = 1'-0"

